

Recommended Mortar Joints

When choosing your bricks it is important to select your mortar colours at the same time to ensure you achieve your desired finish. Selecting the right mortar type and colour alters the appearance of your bricks. For example cream mortar with light coloured bricks may achieve a harmonious effect whereas white mortar with a dark brick will give you a more contrasting look.

Common mortar colours include:

- **Natural or grey** - most commonly used
- **White** - highlights the true colour of the brick and provides a sharp contrast
- **Cream** - can blend and tone in with lighter bricks
- **Coloured mortar to match the brick colour** - this gives a more modern and smooth look making it difficult to distinguish between the brick and mortar

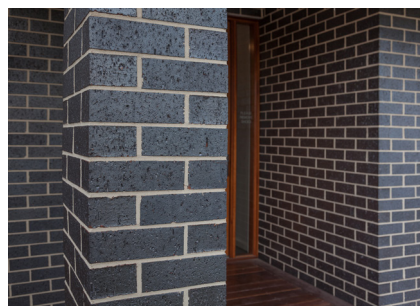


Selkirk Brick range is recommended to be used with a roller mortar joint. A flush mortar joint can also be used on the products noted below with an asterisk*.

BISHOPS HOUSE TUMBLED*	MUSKET HAZE	<p>ROLLED</p>
BUCKRAM	NOUVEAU GREY	
CIENA	REBELLION RED	
CIRRUS	ROSEHILL	
CRITERION CLASSIC	SMOOTH MACLAREN	
CRITERION TUMBLED	SMOOTH RED	
DAWNBREAK	TANNUM	
GOLDFIELD HAZE	TAWNY HERITAGE	
IRONSTONE	THUNDERSTORM	
LANEWAY VIBE TUMBLED*	TREASURY RED TUMBLED*	
LATROBE	VINTAGE RED CLASSIC	<p>FLUSH</p>
LONSDALE*	VINTAGE RED TUMBLED	
MACEDON	WELLBOURNE	
MOONSHADOW		

ROLLED MORTAR JOINTS

Rolled mortar joints complement nearly all brick and house styles and are used for their crisp modern finish. Rolled joints create fine shadow lines which bring out the horizontal lines of the brickwork and to a lesser extent the vertical lines.



FLUSH MORTAR JOINTS

Flush joints don't allow shadow lines to form, giving the wall a smoother more uniform look.

Using a mortar colour to match your bricks takes this a step further.

